

2.9T



Engineered for the future, built on experience

We offer

- Mobile Crane Hire
- Contract Lifting
- Specialist Transport
- Machinery Removals & Installation
- Mini Crawler Cranes

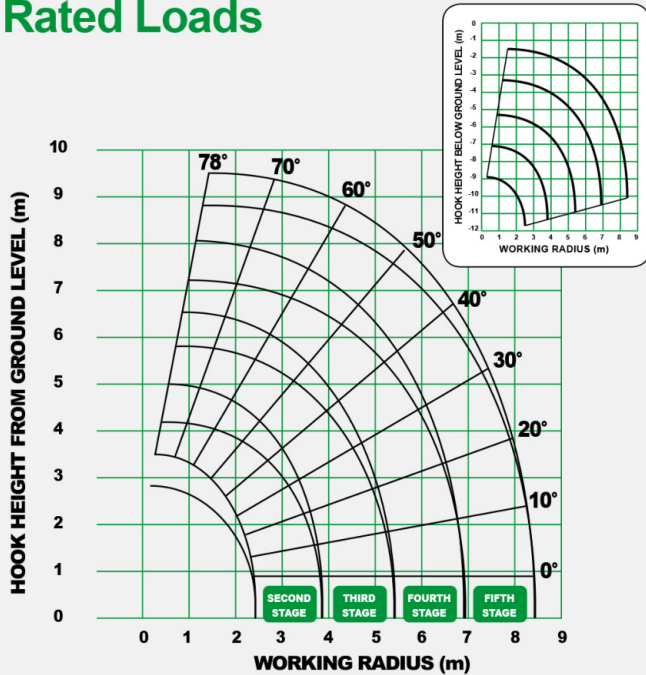
Unic URW-295

Specification

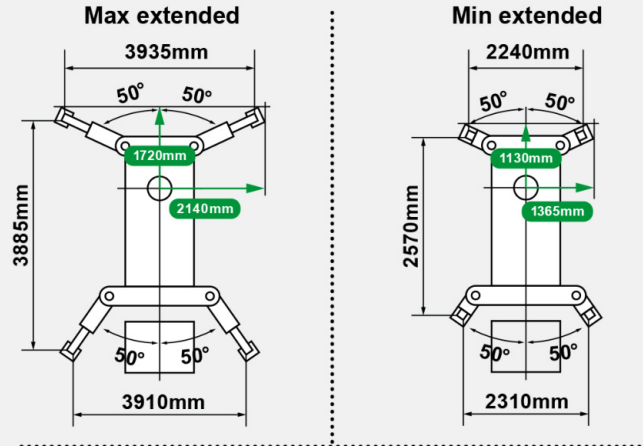
Capacity	2.9t x 1.4m
Max. working radius	8.41m
Max. lifting height	Approx. 8.8m (9.8m with manual fly jib, 10.47 with fixed hook)
Max. rope length	14.12m (4 fall), 29.24m (2 fall), 59.47m (1 fall)
Dimensions folded	L 2690 (2905mm diesel and electrical dual) x W 600 x H 1375mm
Weight unladen	1850kg (1950kg with electric option, 1920kg with diesel option, 2090kg with diesel and electric dual option)
Point loadings	Available on request
Hook speed	10m/min (with 4 layers and 4 falls)
Telescopic system	Boom length: 2.53 - 8.65m Telescoping speed: 6.12m/20 secs Boom type: 5 section hydraulically telescoping boom, hexagonal box construction
Derricking angle/speed	Approx. 0-78°/11 secs
Slewing angle/speed	360° (continuous) 1.5min rpm
Traction system	Drive: Hydrostatic, stepless forward and reverse Travel speed: 0-2.3km/h Gradeability: ± 20° (vertical) 10° (traverse) Track ground length: 1050mm Track ground pressure: 48kPa (0.49kg/cm ²) Track width: 180mm

Engine	Manufacturer: Mitsubishi (Kubota diesel) Fuel: Petrol with LPG and electric options, diesel with electric option Maximum output: 9.6kW (13PS) / 2000min rpm Starting method: Electric and recoil start as standard Tank capacity: 6 litres petrol, 9 litres diesel
Electric motor	Power: 3.7kW Voltage: 400v AC 50/60Hz
Standard equipment	Computer controlled moment limiter (safe load indicator), radio remote control, over winding alarm, computer controlled intelligent voice warning system, multi-function operation by radio remote control, intelligent throttle activation, automatic hook stow, overload warning alarms, overload warning lamps and working area limitation
Optional equipment	1 fall hook block, 2 fall hook block, LPG dual power, mains electric dual power (400v), diesel engine, low marking tracks, slew limitation, searcher hook small 300kg, searcher hook 700kg, 600kg capacity hydraulic fly jib (295-2), manual fly jib 700kg with single part line, radio remote control with feedback display (with i4500 SLI) and data logging

Rated Loads

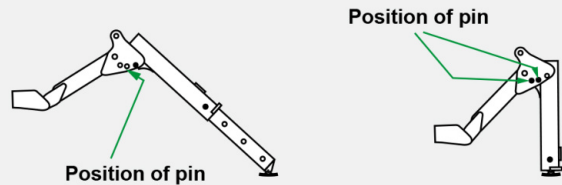


Outrigger Positions



Outrigger setting with inner box extended to its maximum

Outrigger setting with inner box extended to its minimum



SECOND STAGE

SECOND STAGE EXTENDED – 2.53 - 4.075m Boom length

Working Radius	m	up to 1.0	1.4	1.5	1.8	2.0	2.5	3.0	3.5	3.835
Outrigger	Max-extended kg	2,900	2,900	2,650	2,250	2,050	1,650	1,300	1,000	900
	Min-extended kg	2,000	2,000	2,000	1,450	1,100	650	490	350	250

THIRD STAGE

THIRD STAGE EXTENDED – 4.075 - 5.61m Boom length

Working Radius	m	up to 2.2	2.5	2.9	3.0	3.5	4.0	4.5	5.0	5.37
Outrigger	Max-extended kg	1,350	1,350	1,350	1,250	1,000	800	650	520	430
	Min-extended kg	800	650	530	500	380	280	220	160	120

FOURTH STAGE

FOURTH STAGE EXTENDED – 5.61 - 7.13m Boom length

Working Radius	m	up to 3.3	3.8	4.0	4.5	5.0	5.5	6.0	6.5	6.89
Outrigger	Max-extended kg	850	850	750	600	500	420	360	320	270
	Min-extended kg	420	340	300	250	190	140	100	80	60

FIFTH STAGE

FIFTH STAGE EXTENDED – 7.13 - 8.65m Boom length

Working Radius	m	up to 3.8	4.1	4.5	5.0	5.5	6.0	6.5	7.0	8.0	8.41
Outrigger	Max-extended kg	550	550	450	370	310	270	230	200	150	130
	Min-extended kg	350	290	250	200	160	130	100	70	40	30