

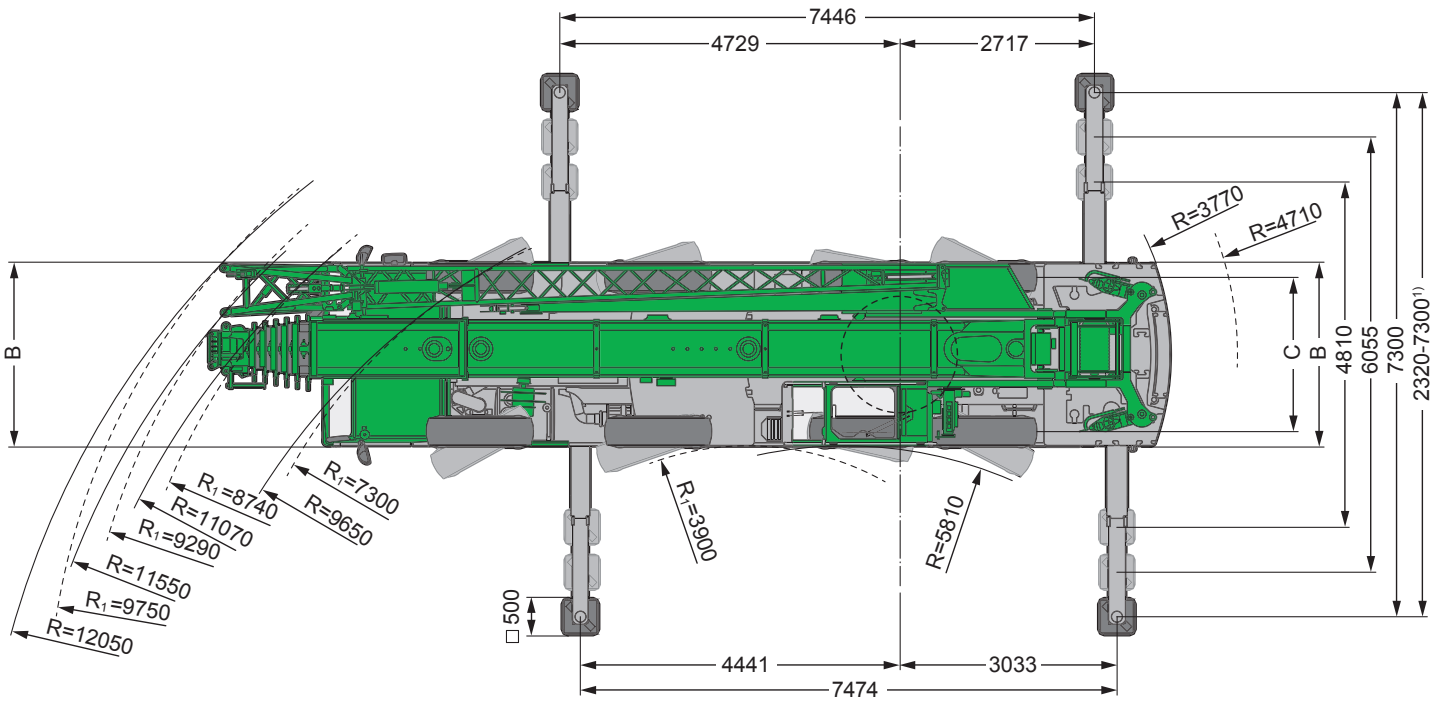
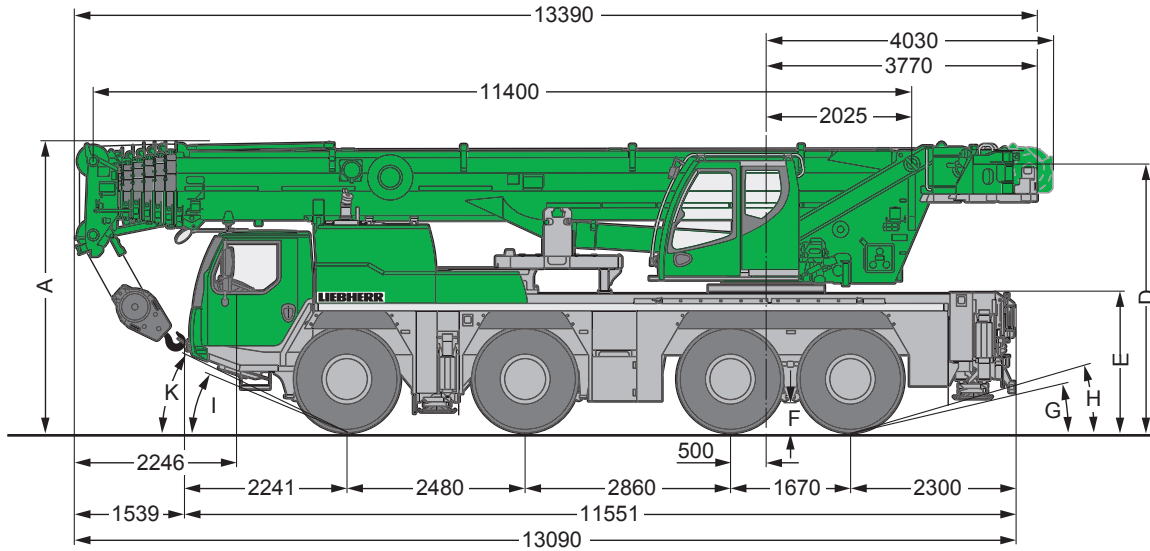


## The Ready for Anything All-Rounder

### We offer:

- Mobile Crane Hire
- Contract Lifting
- Specialist Transport
- Machinery Removals & Installation
- Mini Crawler Cranes
- CPCS Training Centre

# Dimensions



R<sub>1</sub> = All wheel steering  
 1) Only with VarioBase®

	Dimensions (mm)										
	A	A 100mm*	B	C	D	E	F	G	H	I	K
385/95 R 25 (14.00 R 25)	3950	3850	2550	2160	3644	1866	353	11°	18°	20°	26°
445/95 R 25 (16.00 R 25)	4000	3900	2550	2100	3694	1916	403	13°	19°	22°	27°
525/80 R 25 (20.5 R 25)	4000	3900	2690	2170	3694	1916	403	13°	19°	22°	27°





\* lowered

While every care has been taken in the preparation of the ratings given in this leaflet, and all reasonable steps have been taken to check the accuracy of the information, the Company cannot accept responsibility for any inaccuracy in respect of any matter arising out of, or in connection with the use of these tables.

## Crane Data











### Hook block

			
68.0 t	7	12	0.76 t
59.2 t	5	10	0.53 t
42.3 t	3	7	0.45 t
18.7 t	1	3	0.30 t
6.3 t	-	1	0.14 t




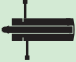

### Crane carrier

	 min	 max	 %
385/95 R 25 (14.00 R 25)	0.44	80	> 60%
445/95 R 25 (16.00 R 25)	0.48	85	> 60%
525/80 R 25 (20.5 R 25)	0.48	85	> 60%

	
	12 / R2
	4 / R2













### Maximum supporting forces

		
F <sub>max</sub>	40.8 t	54.3 t



### Crane superstructure

	 max			 F
	0 - 125 m/min single line	17mm	240m	63kN
	0 - 125 m/min single line	17mm	240m	63kN
	0 - 1.5 min <sup>-1</sup>			
	approx. 57 seconds to reach 85° boom angle			
	approx. 403 seconds for boom extension from 11.4m - 60m			

While every care has been taken in the preparation of the ratings given in this leaflet, and all reasonable steps have been taken to check the accuracy of the information, the Company cannot accept responsibility for any inaccuracy in respect of any matter arising out of, or in connection with the use of these tables

# Lifting Capacities



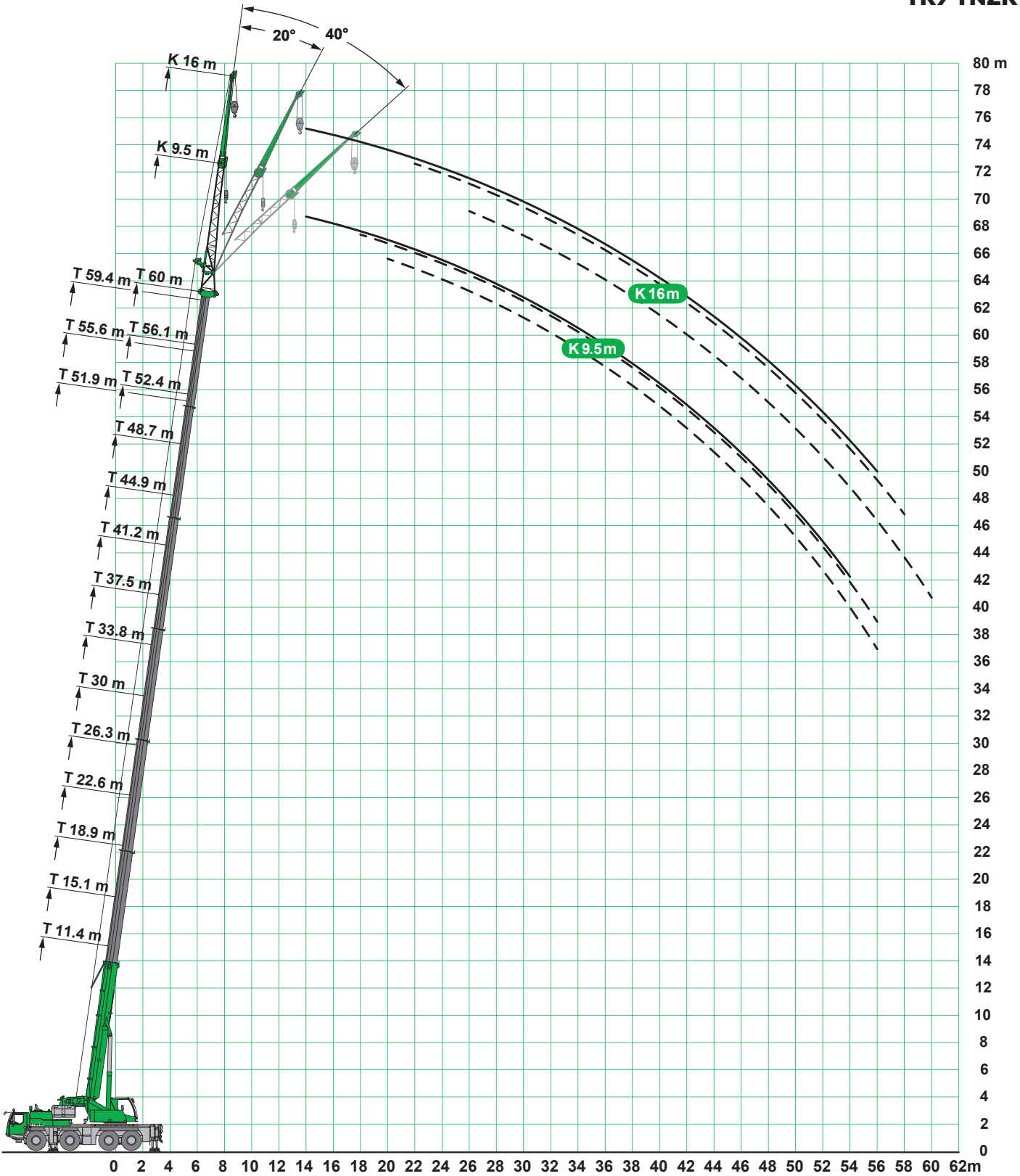
Height (m)	12.7	15.1	18.9	22.6	26.3	30	33.8	37.5	41.2	44.9	48.7	52.4	55.6	56.1	59.4	60
3	90	59.2	59.2	59.2	48											
3.5	59.2	59.2	58.2	56.3	48	36.6										
4	55.6	54.9	53.2	51	47.5	36.6										
4.5	50.9	50.5	49	46.8	45.3	36.6	30.4									
5	47.6	46.7	45.4	43.1	41.7	36.3	30	24.5								
6	42	40.3	40.2	38.3	36.7	35.1	28.8	23.8	19.3							
7	36.6	35.3	35.8	34.4	33.6	32.3	27.6	22.9	19.1	15.2						
8	31.6	30.9	31.4	31.1	30.5	29.2	26.4	22.1	18.9	15.1	11.7					
9	27.1	27	27.6	27.9	27.7	26.7	25	21.3	18.6	15	11.5	9.2				
10			24.4	24.7	24.7	24.4	23.5	20.5	18.1	14.4	11.2	9	7.3	4.9	5.3	
11			21.6	22	22	21.9	22.1	19.7	17.1	13.8	10.8	8.8	7.1	4.9	5.3	4.2
12			19.5	19.6	19.7	19.6	19.9	18.9	16.1	13.3	10.4	8.5	7	4.8	5.2	4.2
14				16.1	16.3	16.4	16.2	16	14.3	12.2	9.4	8	6.7	4.7	5	4.2
16				13.6	13.8	13.7	13.5	13.3	12.7	11.3	8.5	7.3	5.9	4.5	4.8	4.1
18					11.6	11.6	11.4	11.1	10.7	10.4	7.6	6.7	5.4	4.2	4.6	4
20					9.9	9.8	9.6	9.3	9.6	9.3	6.9	6.1	5	4	4.3	3.8
22						8.4	8.2	8.5	8.3	7.9	6.3	5.5	4.6	3.7	4.1	3.6
24						7.3	7.3	7.4	7.1	6.8	5.9	5	4.3	3.5	3.8	3.4
26							6.7	6.5	6.1	5.8	5.5	4.6	4	3.3	3.6	3.2
28								5.6	5.3	5.1	5.1	4.2	3.8	3.1	3.4	3
30								4.9	4.6	4.8	4.5	3.9	3.5	2.9	3.2	2.9
32									4.3	4.2	4	3.8	3.3	2.7	3.1	2.7
34									4	3.8	3.5	3.5	3.1	2.6	2.9	2.6
36										3.4	3.3	3.2	2.9	2.4	2.7	2.5
38										3.1	3.1	2.9	2.8	2.3	2.6	2.3
40											2.8	2.7	2.6	2.1	2.4	2.2
42												2.5	2.5	2.3	2	2.2
44													2.2	2.2	1.9	2
46														2	1.9	1.8
48															1.7	1.7
50															1.7	1.5
52															1.6	1.4
54															1.4	1.2
56																1
																0.8

\* = ±0° over rear

While every care has been taken in the preparation of the ratings given in this leaflet, and all reasonable steps have been taken to check the accuracy of the information, the Company cannot accept responsibility for any inaccuracy in respect of any matter arising out of, or in connection with the use of these tables.

# Lifting Heights

TK/TNZK



While every care has been taken in the preparation of the ratings given in this leaflet, and all reasonable steps have been taken to check the accuracy of the information, the Company cannot accept responsibility for any inaccuracy in respect of any matter arising out of, or in connection with the use of these tables

# Lifting Capacities

## TELESCOPIC BOOM & MECHANICALLY/HYDRAULICALLY ADJUSTABLE FOLDING JIB



m	11.4m			15.1m			18.9m			22.6m			26.3m			30m			33.8m			37.5m		
	9.5m																							
	0°	20°	40°	0°	20°	40°	0°	20°	40°	0°	20°	40°	0°	20°	40°	0°	20°	40°	0°	20°	40°	0°	20°	40°
3.5	12.6			12.6			12.6																	
4	12.6			12.6			12.6																	
4.5	12.6	10.3		12.6			12.6						11.9											
5	12.6	9.9		12.6			12.6						11.9				11.2							
6	12.5	9.2		12.5	9.3		12.5	9.3				12.3				11.8					10.3			
7	11.5	8.3	5.7	12.2	8.6		12.2	8.9				11.9	8.9		11.5					10.3			9	
8	10	7.5	5.3	11.3	7.9	5.4	11.6	8.3				11.5	8.5		11.2	8.6			10.8			10.2	9	
9	8.8	6.9	5	10.1	7.3	5.2	10.9	7.7	5.3	11.1	8	5.4	10.9	8.2		10.6	8.2		10	8.1		9		
10	7.6	6.3	4.8	8.9	6.8	4.9	10.1	7.2	5.1	10.5	7.5	5.2	10.5	7.8	5.2	10.2	7.9		9.7	7.9		8.8	7.6	
11	6.8	5.9	4.5	8	6.4	4.7	9.2	6.8	4.9	9.9	7.1	6	10.1	7.4	5.1	9.9	7.6	5.1	9.5	7.7	5.2	8.7	7.4	
12	6	5.5	4.3	7.2	6	4.5	8.3	6.4	4.7	9.2	6.8	4.8	9.6	7	4.9	9.6	7.3	5	9.2	7.4	5.1	8.5	7.2	
14	4.9	4.8	4.1	6	5.3	4.3	7	5.8	4.4	7.8	6.1	4.5	8.6	6.4	4.6	8.9	6.6	4.7	8.8	6.8	4.8	8.2	6.8	
16	4.1	4.3	4	5	4.8	4.1	5.9	5.2	4.2	6.8	5.6	4.3	7.4	5.9	4.4	8.1	6.1	4.5	8.3	6.3	4.6	7.8	6.4	
18	3.6	4	1.5	4.3	4.4	4	5.1	4.8	4.1	5.9	5.1	4.1	6.6	5.4	4.2	7.1	5.7	4.3	7.6	5.9	4.4	7.5	6	
20				3.8	4.1	4	4.5	4.4	4	5.2	4.8	4	5.8	5.1	4.1	6.4	5.3	4.2	6.8	5.5	4.2	7	5.6	
22				3.5	4		4	4.2	3.9	4.6	4.5	4	5.2	4.7	4	5.7	5	4.1	6.2	5.2	4.1	6.4	5.3	
24							3.7	4	2.3	4.2	4.2	3.9	4.7	4.5	4	5.2	4.7	4	5.6	4.9	4.1	5.9	5	
26							3.4	3.5		3.8	4.1	3.9	4.3	4.3	3.9	4.7	4.5	3.9	5.1	4.7	4	5.4	4.8	
28										3.6	4		4	4.1	3.9	4.4	4.3	3.9	4.7	4.4	3.9	4.9	4.6	
30													3.7	4	2.9	4	4.2	3.9	4.4	4.3	3.9	4.4	4.4	
32													3.5	4		3.8	4.1	3.9	4	4.1	3.9	3.9	4	
34																3.6	3.9	2	3.6	3.7	3.7	3.5	3.6	
36																3.4	3.5		3.2	3.3	3.2	3.3	3.2	
38																			2.9	2.9		3	3.1	
40																			2.6	2.6		2.7	2.7	
42																						2.4	2.5	
44																						2.2	2.2	


m	41.2			44.9m			48.7m			51.9m			52.4m			55.6m			56.1m			59.4m			60m		
	9.5m																										
	0°	20°	40°	0°	20°	40°	0°	20°	40°	0°	20°	40°	0°	20°	40°	0°	20°	40°	0°	20°	40°	0°	20°	40°	0°	20°*	40°*
8	7.7																										
9	7.7			5.9																							
10	7.7			5.9			4.7																				
11	7.6	6.9		5.9			4.7			3.2			3.8														
12	7.5	6.8		5.9	5.8		4.7			3.2			3.8			2.9			3.1								
14	7.3	6.5	4.8	5.9	5.7		4.7	4.7		3.2			3.8	3.8		2.9			3.1			2.6			2.5		
16	7	6.2	4.5	5.7	5.5	5.2	4.6	4.6	4.6	3.1	3.1		3.8	3.8		2.9	2.8		3.1	3		2.6	2.6		2.5		
18	7.67	5.9	4.4	5.4	5.3	5	4.4	4.4	4.3	3	3	2.9	3.6	3.6	3.6	2.9	2.8	2.8	3	3	3	2.6	2.6		2.5		
20	6.1	5.6	4.3	5	4.9	4.9	4.2	4.1	4.1	2.9	2.8	2.8	3.5	3.5	3.5	2.8	2.7	2.7	3	2.9	2.9	2.5	2.5	2.6	2.5	2.5	
22	5.5	5.3	4.2	4.6	4.5	4.5	3.9	3.9	3.9	2.7	2.7	2.8	3.4	3.3	3.3	2.7	2.6	2.6	2.9	2.8	2.8	2.5	2.5	2.5	2.4	2.5	
24	5	4.9	4.1	4.3	4.2	4.2	3.7	3.7	3.7	2.6	2.5	2.5	3.2	3.2	3.2	2.5	2.5	2.5	2.8	2.7	2.7	2.4	2.4	2.4	2.4	2.4	
26	4.6	4.6	4	4	4	4	3.4	3.4	3.5	2.5	2.4	2.4	3	3	3	2.4	2.4	2.4	2.6	2.6	2.6	2.3	2.3	2.3	2.3	2.3	
28	4.2	4.2	4	3.7	3.7	3.7	3.2	3.2	3.3	2.3	2.3	2.3	2.8	2.9	2.9	2.3	2.3	2.3	2.5	2.5	2.5	2.2	2.2	2.2	2.2	2.2	
30	4	3.9	3.9	3.4	3.5	3.5	3	3	3.1	2.2	2.2	2.2	2.7	2.7	2.7	2.2	2.2	2.2	2.4	2.4	2.4	2.1	2.1	2.1	2.1	2.1	
32	3.8	3.6	3.7	3.2	3.2	3.3	2.8	2.9	2.9	2	2	2.1	2.5	2.5	2.6	2	2	2.1	2.3	2.3	2.3	2	2	2	2	2	
34	3.4	3.5	3.4	3	3	3	2.7	2.7	2.7	1.9	1.9	1.9	2.4	2.4	2.4	1.9	1.9	2	2.1	2.1	2.2	1.9	1.9	1.9	1.9	1.9	
36	3	3.2	3.3	2.8	2.8	2.8	2.5	2.5	2.6	1.7	1.8	1.8	2.2	2.3	2.3	1.8	1.8	1.8	2	2	2.1	1.8	1.8	1.8	1.8	1.8	
38	2.7	2.8	2.9	2.5	2.6	2.6	2.3	2.4	2.4	1.6	1.6	1.7	2.1	2.1	2.2	1.7	1.7	1.7	1.9	1.9	2	1.7	1.7	1.7	1.7	1.7	
40	2.4	2.5	2.5	2.2	2.3	2.4	2.1	2.2	2.2	1.5	1.5	1.6	2	2	2	1.5	1.6	1.6	1.8	1.8	1.9	1.6	1.6	1.6	1.6	1.6	
42	2.1	2.2	2.2	2.1	2.1	2.1	1.9	2	2.1	1.4	1.4	1.4	1.8	1.9	1.9	1.4	1.5	1.5	1.7	1.7	1.7	1.5	1.5	1.5	1.5	1.5	
44	2	2		2	2	2	1.8	1.8	1.8	1.3	1.3	1.3	1.7	1.8	1.8	1.4	1.4	1.4	1.6	1.6	1.6	1.4	1.4	1.4	1.4	1.4	
46	1.9	1.9		1.7	1.8	1.8	1.7	1.7	1.7	1.2	1.2	1.2	1.6	1.6	1.7	1.3	1.3	1.3	1.5	1.5	1.6	1.3	1.3	1.3	1.3	1.3	
48	1.8	1.8		1.6	1.6		1.5	1.6	1.7	1.1	1.1	1.1	1.5	1.5	1.5	1.2	1.2	1.2	1.4	1.4	1.5	1.2	1.2	1.2	1.2	1.2	
50				1.5	1.6		1.4	1.4	1.4	1	1	1	1.3	1.4	1.4	1.1	1.1	1.1	1.2	1.3	1.3	1.1	1.2	1.2	1.1	1.2	
52				1.4			1.3	1.3		0.9	0.9	1	1.2	1.2	1.2	1	1	1.1	1	1.1	1.1	1	1.1	1.1	0.9	1	
54							1.2	1.2		0.9	0.9		1	1.1		0.9	1	1	0.8	0.9	0.9	0.8	0.9	0.9	0.8	0.9	
56										0.8	0.8		0.9	0.9		0.9	0.9	0.9	0.6	0.7	0.7	0.6	0.7	0.7		0.7	
58										0.7	0.8		0.7	0.7		0.7	0.8										

\*only possible in TNZK mode

# Lifting Capacities

## TELESCOPIC BOOM & MECHANICALLY/HYDRAULICALLY ADJUSTABLE FOLDING JIB



 m	11.4m			15.1m			18.9m			22.6m			26.3m			30m			33.8m			37.5m						
	16m																											
	0°	20°	40°	0°	20°	40°	0°	20°	40°	0°	20°	40°	0°	20°	40°	0°	20°	40°	0°	20°	40°	0°	20°	40°	0°	20°	40°	
3.5	6.2			5.8																								
4	6.1			5.7			5.5																					
4.5	5.9			5.7			5.5			5.3																		
5	5.8			5.6			5.4			5.3			5.1															
6	5.5			5.4			5.3			5.2			5.1			4.9												
7	5.2			5.1			5.1			5			5			4.9			4.7						4.3			
8	4.9	3.8		4.9			4.9			4.9			4.8			4.8			4.6						4.3			
9	4.5	3.6		4.6	3.6		4.7			4.7			4.7			4.6			4.5						4.3			
10	4.2	3.4		4.4	3.4		4.5	3.5		4.5	3.5		4.5			4.5			4.4						4.2			
11	4	3.2		4.1	3.3		4.3	3.4		4.3	3.4		4.4	3.4		4.4			4.3						4.1			
12	3.7	3.1	2.6	3.9	3.2		4.1	3.2		4.2	3.3		4.2	3.3		4.2	3.3		4.2	3.3				4				
14	3.3	2.9	2.5	3.6	2.9	2.5	3.7	3	2.5	3.9	3.1	2.5	4	3.1		4	3.1		4	3.1				3.9	3.1			
16	2.9	2.7	2.3	3.2	2.8	2.4	3.4	2.8	2.4	3.6	2.9	2.5	3.7	2.9	2.5	3.8	3	2.5	3.8	3	2.5	3.7	3					
18	2.5	2.5	2.2	2.9	2.6	2.3	3.2	2.7	2.3	3.3	2.8	2.4	3.5	2.8	2.4	3.6	2.8	2.4	3.6	2.9	2.4	3.6	2.9	2.4	3.6	2.9	2.4	
20	2.2	2.4	2.1	2.6	2.5	2.2	2.9	2.6	2.2	3.1	2.6	2.3	3.2	2.7	2.3	3.4	2.7	2.3	3.4	2.8	2.3	3.4	2.8	2.3	3.4	2.7	2.3	
22	2	2.2	2.1	2.3	2.4	2.1	2.6	2.4	2.2	2.8	2.5	2.2	3	2.6	2.2	3.2	2.6	2.3	3.2	2.7	2.3	3.2	2.7	2.3	3.2	2.7	2.3	
24	1.8	2.1		2.1	2.2	2.1	2.4	2.4	2.1	2.6	2.4	2.1	2.8	2.5	2.2	3	2.5	2.2	3.1	2.6	2.2	3.1	2.6	2.2	3.1	2.6	2.2	
26				1.9	2.1	2.1	2.2	2.3	2.1	2.4	2.3	2.1	2.6	2.4	2.1	2.8	2.4	2.2	2.9	2.5	2.2	3	2.5	2.2	3	2.5	2.2	
28				1.8	2.1		2	2.2	2.1	2.2	2.3	2.1	2.4	2.3	2.1	2.6	2.4	2.1	2.8	2.4	2.1	2.8	2.4	2.1	2.8	2.4	2.2	
30							1.9	2.1	2.1	2.1	2.2	2.1	2.3	2.3	2.1	2.4	2.3	2.1	2.6	2.3	2.1	2.7	2.3	2.1	2.7	2.3	2.1	
32							1.7	2.1		1.9	2.1	2.1	2.1	2.2	2	2.3	2.2	2	2.4	2.3	2.1	2.6	2.3	2.1	2.6	2.3	2.1	
34										1.8	2.1		2	2.1	2	2.1	2.2	2	2.3	2.2	2	2.4	2.2	2	2.4	2.2	2.1	
36										1.7			1.9	2.1	2	2	2.2	2	2.2	2.2	2	2.3	2.2	2	2.3	2.2	2	
38													1.8	2.1		1.9	2.1	2	2.1	2.2	2	2.2	2.2	2	2.2	2.2	2	
40													1.7			1.8	2.1	2	2	2.1	2	2.1	2.1	2	2.1	2.1	2	
42																1.8	2.1		1.9	2.1	2	2	2.1	2	2	2.1	2	
44																			1.8	2.1		1.9	2.1	2	1.9	2.1	2	
46																			1.7	2.1		1.8	2.1	2	1.8	2.1	2	
48																									1.7	2		
50																									1.7	1.8		

While every care has been taken in the preparation of the ratings given in this leaflet, and all reasonable steps have been taken to check the accuracy of the information, the Company cannot accept responsibility for any inaccuracy in respect of any matter arising out of, or in connection with the use of these tables

# Lifting Capacities

## TELESCOPIC BOOM & MECHANICALLY/HYDRAULICALLY ADJUSTABLE FOLDING JIB



m	41.2			44.9m			48.7m			51.9m			52.4m			55.6m			56.1m			59.4m			60m				
	16m																												
	0°	20°	40°	0°	20°	40°	0°	20°	40°	0°	20°	40°	0°	20°	40°	0°	20°	40°	0°	20°	40°	0°	20°	40°	0°	20°*	40°*		
8	3.9																												
9	3.9			3.5																									
10	3.9			3.5																									
11	3.9			3.5			3																						
12	3.8			3.5			3			2.2			2.6																
14	3.7	3		3.4			3			2.2			2.6			2				2.1			1.8			1.7			
16	3.6	2.9		3.3	2.8		3			2.2			2.6			2				2.1			1.7			1.7			
18	3.4	2.8	2.4	3.2	2.7		2.9	2.6		2.2	2.1		2.6	2.3		2				2.1			1.7			1.6			
20	3.3	2.7	2.3	3.1	2.6	2.3	2.9	2.5		2.1	2.1		2.6	2.3		2	1.9			2.1	2		1.7			1.6			
22	3.2	2.6	2.3	3	2.6	2.2	2.8	2.4	2.2	2.1	2.1		2.5	2.3	2.1	1.9	1.9			2.1	2		1.6	1.8		1.6	1.7		
24	3	2.5	2.2	2.9	2.5	2.2	2.7	2.4	2.1	2.1	2	2	2.5	2.2	2.1	1.9	1.9	1.9		2	2	1.9	1.6	1.7		1.5	1.6		
26	2.9	2.5	2.2	2.8	2.4	2.2	2.7	2.3	2.1	2	2	1.9	2.4	2.2	2	1.9	1.9	1.9		2	2	1.9	1.6	1.7	1.8	1.5	1.6	1.8	
28	2.8	2.4	2.2	2.7	2.4	2.1	2.6	2.3	2.1	1.9	1.9	1.8	2.4	2.2	2	1.9	1.8	1.8		2	2	1.9	1.6	1.7	1.8	1.5	1.6	1.8	
30	2.7	2.3	2.1	2.6	2.3	2.1	2.5	2.2	2.1	1.8	1.8	1.8	2.3	2.1	2	1.8	1.8	1.7		2	1.9	1.9	1.5	1.7	1.7	1.4	1.6	1.7	
32	2.6	2.3	2.1	2.6	2.3	2.1	2.4	2.2	2	1.7	1.7	1.7	2.2	2.1	2	1.7	1.7	1.7		1.9	1.8	1.8	1.5	1.6	1.7	1.4	1.5	1.6	
34	2.5	2.2	2.1	2.5	2.2	2.1	2.4	2.2	2	1.6	1.6	1.6	2.1	2	2	1.6	1.6	1.6		1.8	1.8	1.7	1.5	1.6	1.6	1.4	1.5	1.6	
36	2.4	2.2	2	2.4	2.2	2	2.2	2.1	2	1.6	1.6	1.6	2	2	2	1.5	1.6	1.6		1.7	1.7	1.7	1.5	1.5	1.5	1.4	1.5	1.5	
38	2.3	2.2	2	2.3	2.1	2	2.1	2.1	2	1.4	1.5	1.5	1.9	1.9	1.9	1.5	1.5	1.5		1.7	1.6	1.6	1.4	1.5	1.5	1.3	1.5	1.5	
40	2.1	2.1	2	2.2	2.1	2	2	2	2	1.4	1.4	1.4	1.8	1.8	1.8	1.4	1.4	1.4		1.6	1.6	1.6	1.3	1.4	1.4	1.3	1.4	1.4	
42	2.1	2.1	2	2.1	2.1	2	1.9	1.9	2	1.3	1.3	1.4	1.7	1.7	1.8	1.3	1.4	1.4		1.5	1.5	1.5	1.3	1.3	1.4	1.3	1.3	1.4	
44	2	2.1	2	1.8	2	2	1.7	1.8	1.9	1.2	1.2	1.3	1.6	1.6	1.7	1.2	1.3	1.3		1.4	1.4	1.5	1.2	1.3	1.3	1.2	1.3	1.3	
46	1.8	2	2	1.6	1.8	1.9	1.6	1.7	1.7	1.1	1.1	1.2	1.5	1.5	1.6	1.1	1.2	1.2		1.3	1.4	1.4	1.1	1.2	1.2	1.1	1.2	1.2	
48	1.7	1.8	1.8	1.5	1.6	1.6	1.4	1.6	1.6	1	1.1	1.1	1.4	1.4	1.5	1	1.1	1.1		1.3	1.3	1.3	1.1	1.1	1.2	1.1	1.1	1.2	
50	1.5	1.6	1.6	1.4	1.5	1.5	1.3	1.4	1.5	0.9	1	1	1.2	1.3	1.4	1	1	1.1		1.2	1.2	1.3	1	1	1.1	1	1	1.1	
52	1.3	1.4		1.3	1.4	1.4	1.2	1.2	1.3	0.8	0.9	0.9	1.2	1.2	1.3	0.9	0.9	1		1.1	1.2	1.2	0.9	1	1	0.9	1	1	
54	1.3	1.3		1.2	1.3		1.1	1.2	1.2	0.8	0.8	0.8	1.1	1.1	1.2	0.8	0.9	0.9		0.9	1.1	1.1	0.9	0.9	0.9	0.8	0.9	0.9	
56				1.1	1.1		1	1.1	1.1	0.7	0.7	0.8	0.9	1	1.1	0.8	0.8	0.8		0.7	0.9	1	0.7	0.8	0.9	0.7	0.8	0.9	
58				1.1			1	1		0.6	0.7	0.7	0.8	0.9	0.9	0.7	0.8	0.8		0.7	0.8		0.7	0.8		0.7	0.8	0.8	
60							0.8	0.9			0.6		0.7	0.8	0.8	0.7	0.7	0.7				0.6			0.6			0.6	0.6
62							0.7							0.6		0.6	0.6												

\*only possible in TNZK mode

While every care has been taken in the preparation of the ratings given in this leaflet, and all reasonable steps have been taken to check the accuracy of the information, the Company cannot accept responsibility for any inaccuracy in respect of any matter arising out of, or in connection with the use of these tables.



---

[www.emersoncranes.com](http://www.emersoncranes.com)

**Head Office:**

Emerson Crane Hire Ltd  
Emerson House  
Freshwater Rd  
Dagenham  
London  
Essex  
RM8 1RX